



USING LMS XCHANGE TO IMPORT DATA FROM THE APEXZ

Lighthouse Worldwide Solutions



Overview

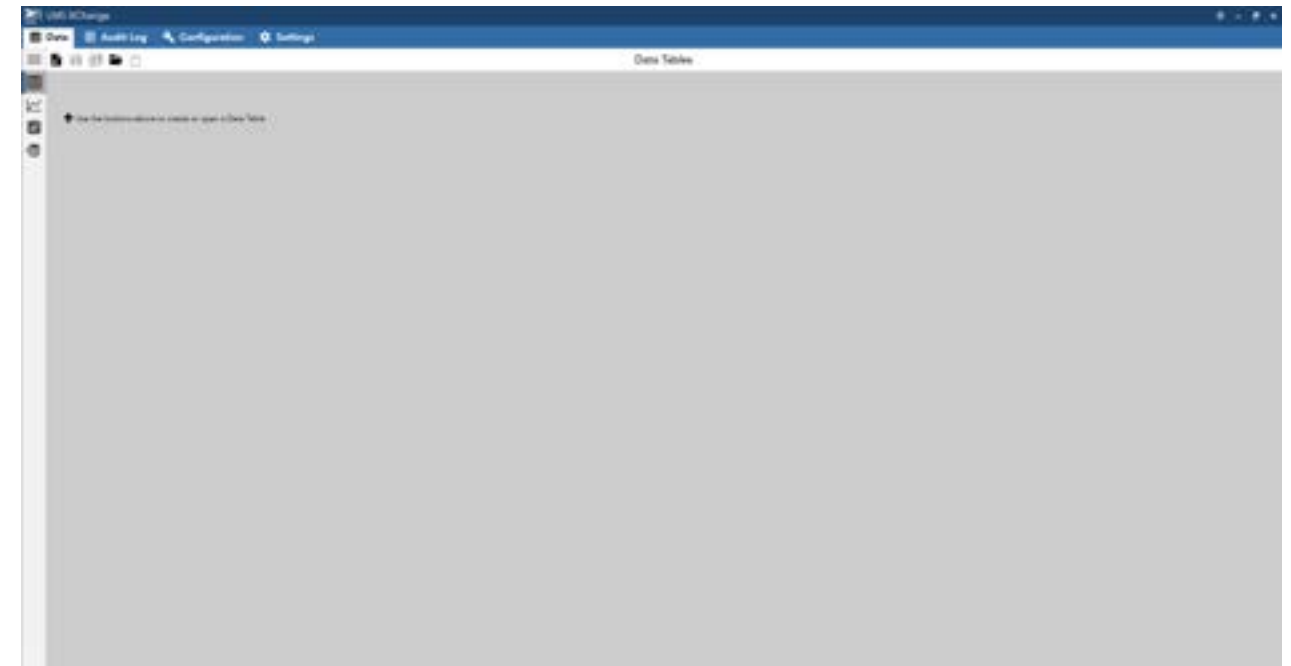
LMS XChange is a versatile software included with the ApexZ portable particle counter. Its features include:

- **A built-in audit log for full traceability.**
- **Validated to 21 CFR Part 1.**
- **Data integrity lifecycle from source to report.**
- **The ability for users to import data collected on ApexZ, ApexR, ApexP, Solair Portable, Vertex, Handheld, and connected sensors.**
- **Managing configurations for ApexZ and ApexR particle counters. It can also manage location lists and imported data from ApexP, Solair Portable, and Handheld units.**

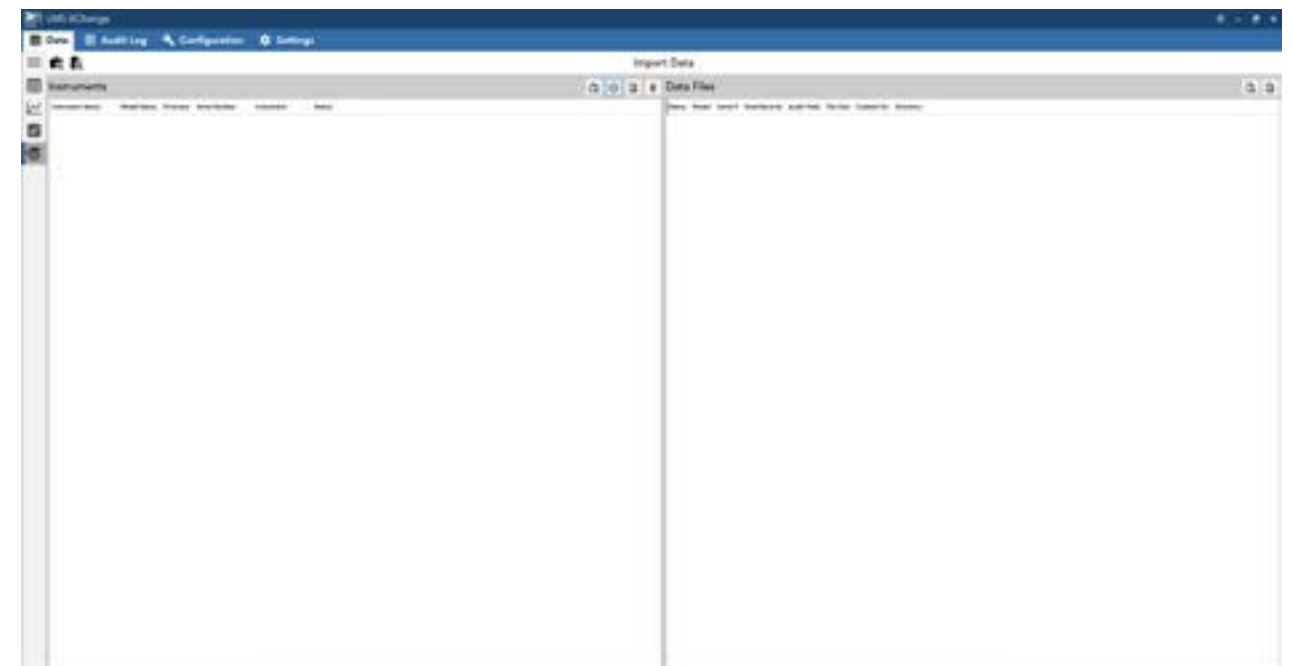
In this paper, we will cover the simple process of using XChange to import data from an ApexZ particle counter.

Step 1: Import Data Screen

- **After starting LMS XChange, assure that you're on the Data Tab.**

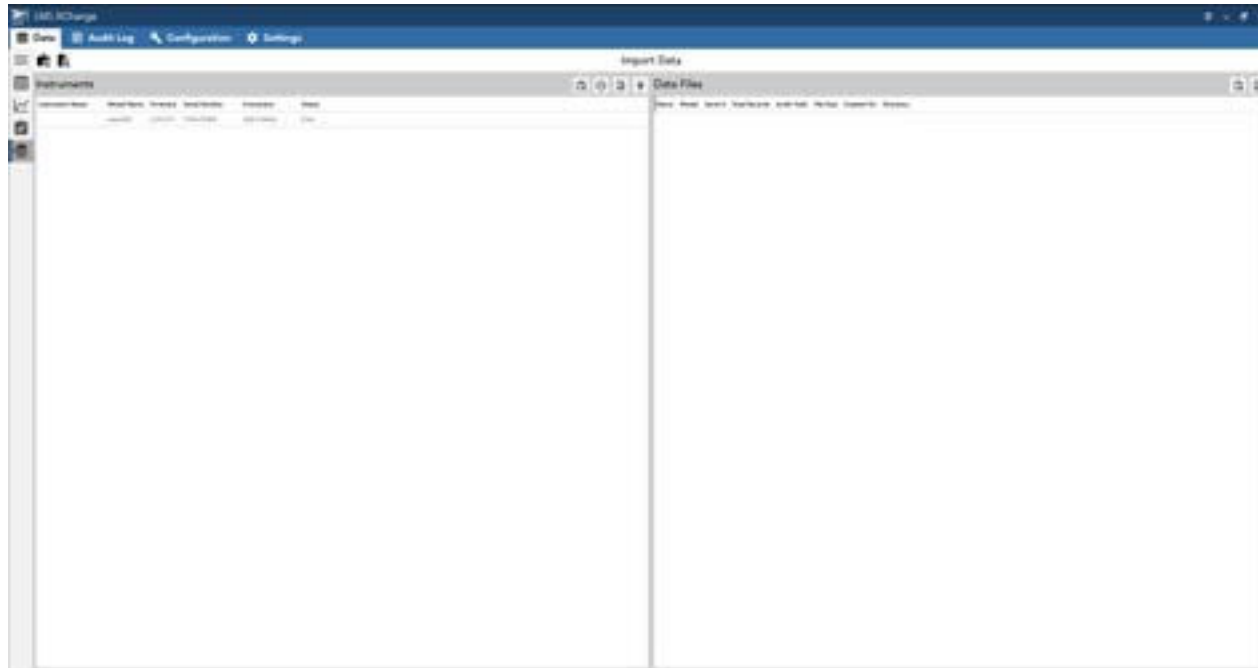


- **From there, go to the Import Data page on the left side.**

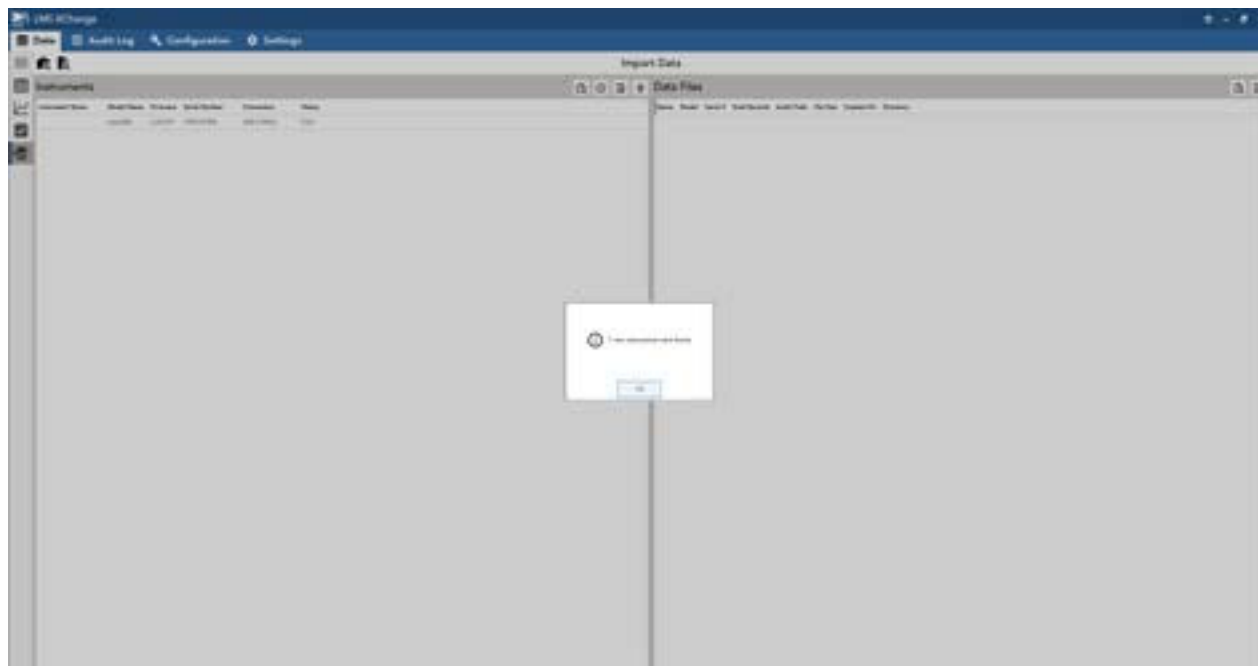


Step 2: Connecting Instrument

- If an instrument is connected and has already been detected, it will show up on the left window titled "Instruments".

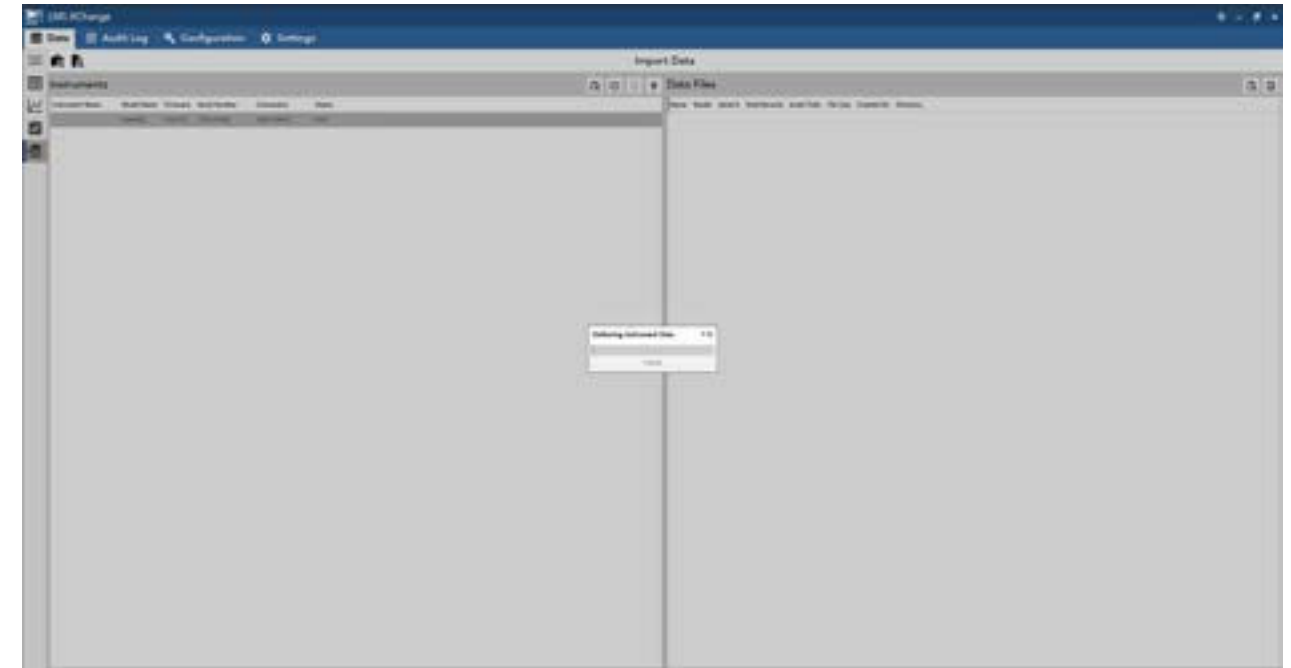


- If your ApexZ is not showing on the list, click the "Scan USB for ApexZ Instruments" button. Click OK once the instrument has been detected.

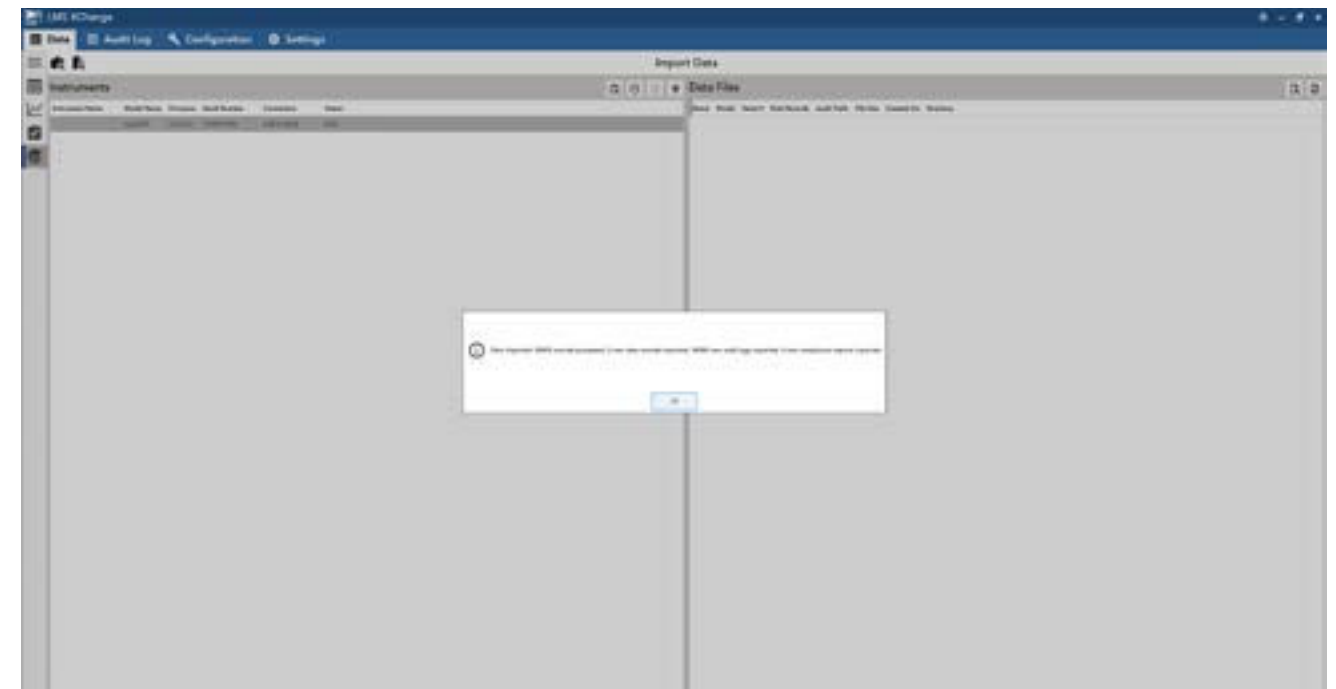


Step 3: Importing Data

- Click the "Import Data" button. A progress window will open showing the data being imported.

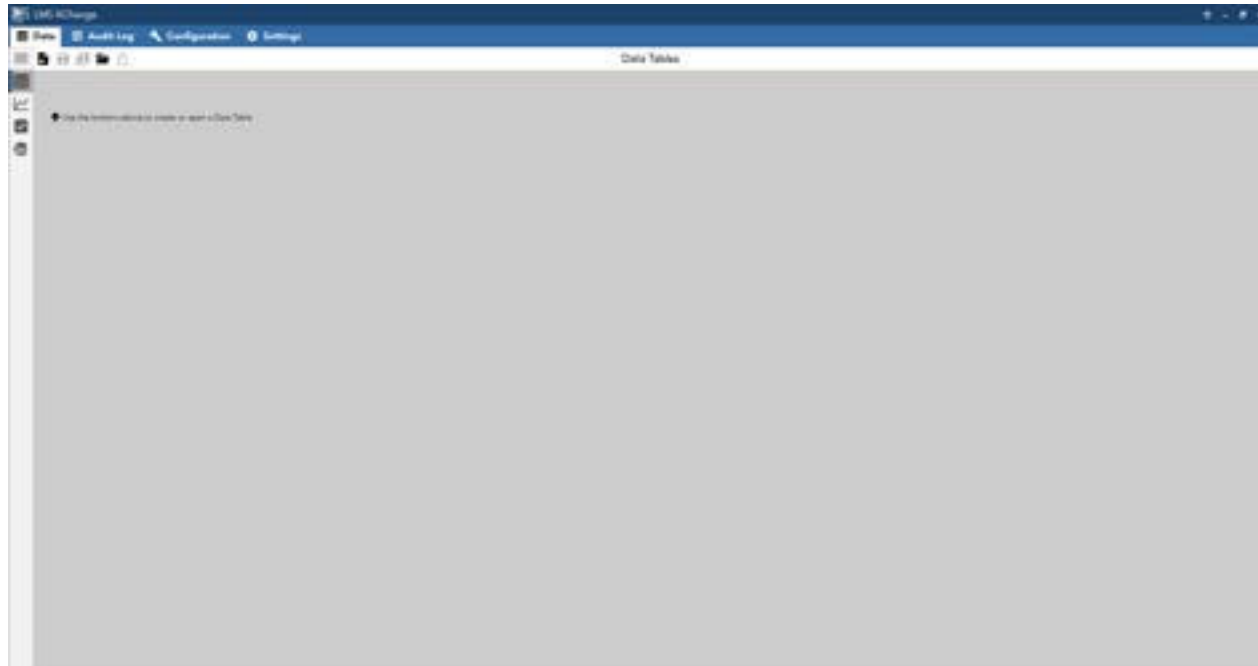


- Once completed, a message will appear with information on the information that's been imported. Click OK.

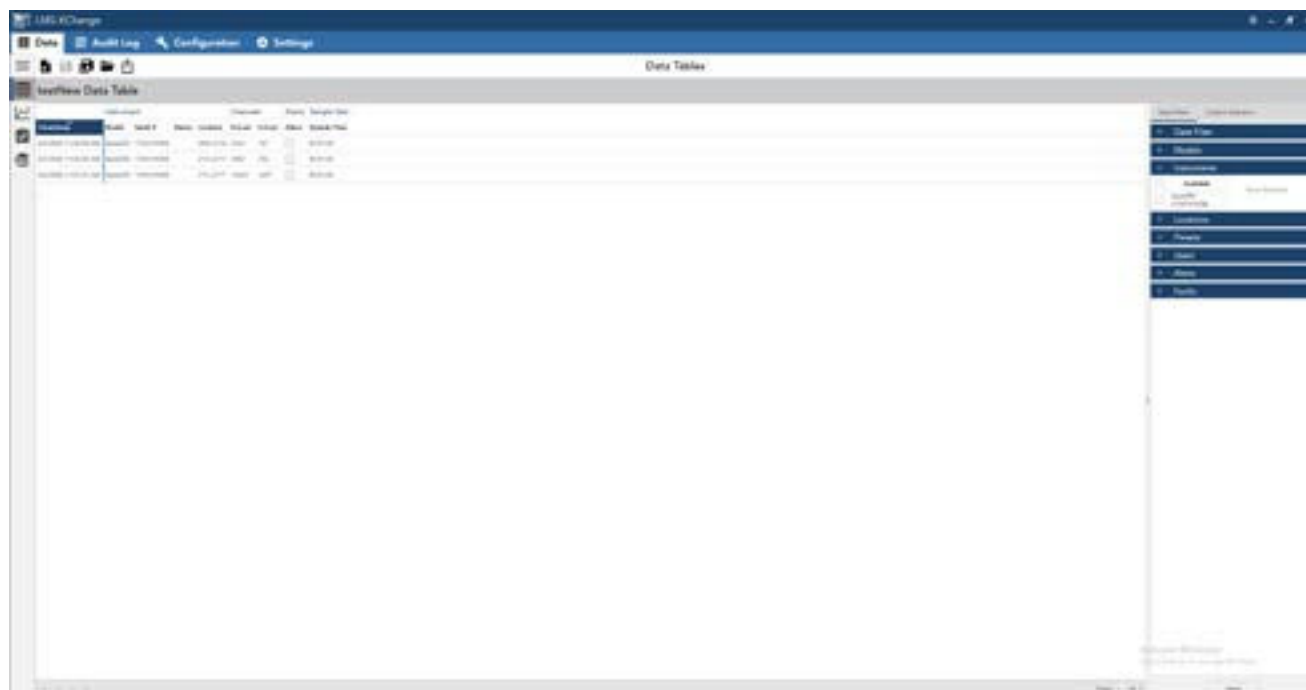


Step 4: Viewing Imported Data

- To view the data that was imported from the ApexZ, select the "Data Table" window on the right.



- If no data is visible, you can use the filters to the right to select the ApexZ that the data was imported from.
- These filters also allow you to filter through imported data by a number of parameters.



Conclusion

LMS XChange provides a robust and user-friendly platform for importing and managing data from various environmental monitoring instruments and file sources. The detailed steps outlined ensure a seamless data import process, maintaining data integrity and facilitating comprehensive data management.